



MAXBRIO RIPPER SERIES

Vibro technology attachments



- World PCT: No. KR2007/004***
- Europe : No. 07 808 2***
- United States : No. 121673***
- Japan : No.11-262***



The First
in the World

Original
Innovative
BR series

maxbrio

Powerful
Performance

Proven Quality &
Reliability by Korea
Institute of Machinery
& Materials

Workable in
extreme weather
conditions
(-40°C to 60°C)



MAXBRIO RIPPER SERIES

Vibro technology attachments

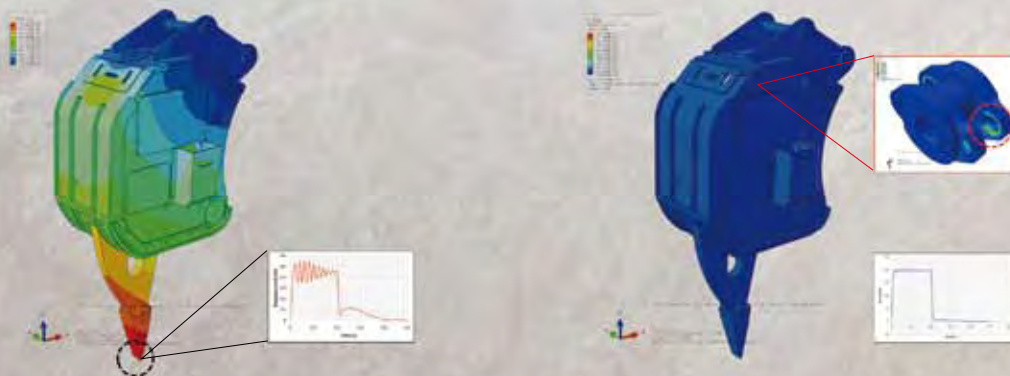


Original Innovative & Reliable Maxbrio Ripper series

- Eco-friendly and noiseless equipment (80dB)
- Protecting the excavators from vibration shock by patented cushion elastomers
- Workable in extreme weather condition (-40°C to 60°C) and under water condition
- The best innovative technology, the most powerful vibration (2500rpm)
- Innovatively designed tooth, pin & cushion elastomer improve durability
- Maximized durability with Hardox wear-resistant steel
- Easy installation by one way piping line (breaker line) from excavator



CAE Simulation Evaluation [FEM Results]





BR15



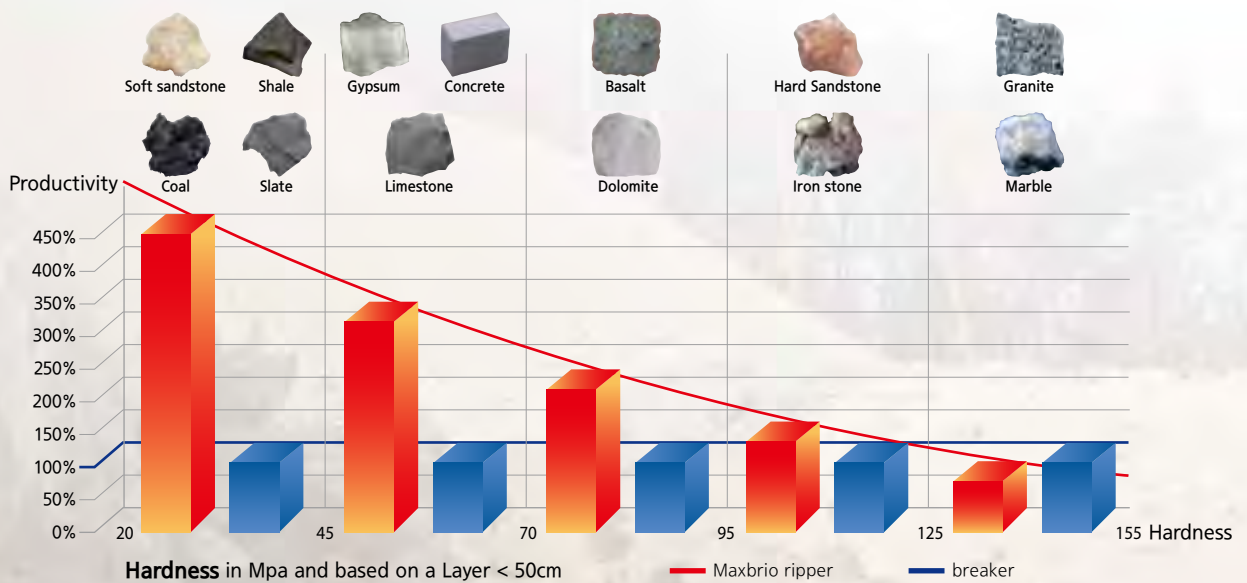
BR25



BR35



Productivity : Daedong Maxbrio ripper Vs. breaker



※ Productivity could be changeable according to construction condition and this chart for reference purpose only.

Maxbrio Ripper covers up to 80% of applications that are using rock breaker.
Up to 5 times higher productivity than rock breaker can be achieved.



Maxbrio Ripper BR Series

Daedong Engineering, is an industry leading manufacturer of innovative and reliable attachments and has been manufacturing quality earthmoving attachments since 1997.

In 2004, the world's first Vibro Ripper was invented by Daedong Engineering and has been evolving through our continuous R&D effort over the decades. It has been proven as a revolutionary attachment for excavation of rocks with high frequency vibration. With its innovative and patented technology (PCT KR2007/004***), Maxbrio Vibro ripper offers up to 5 times higher productivity and much less noise level compare to conventional rock breakers.

Maxbrio Ripper is an excavator attachment developed for high performance rock excavation and demolition work. It is applicable for mining, quarrying, trenching, ripping or digging permafrost and removing asphalt with much less noise which makes it ideal for operating near residential area.

It is designed to increase productivity and efficiency that gets the job done much faster with much lower operational cost.

It can be an effective alternative for drilling and blasting.

2004



2004 KOREA



2005 CZECH REPUBLIC

2006



2006 MALAYSIA



2007 ALGERIA



2008 DUBAI

Application

- Noise restricted area
- Construction site near residential area
- Foundation work, Road construction
- Trenching, tunneling and dredging
- Open pit mine and quarry
- Fractured or layered rock
- Permafrost



2009 TURKEY



2010 JAPAN

2011



2011 MEXICO



2015 SAUDI ARABIA

2015



2015 ITALY



2016 USA



2016 VIETNAM

Origin of Maxbrio ripper

Maxbrio Vibro ripper was supported by Korean government's R&D funding of US\$ 3.2 million from 2012 to 2014. During those 3 years, Maxbrio had been critically inspected for its durability in collaboration with KIMM (Korea Institute of Machinery & Materials). Acquired performance certificate from KIMM.



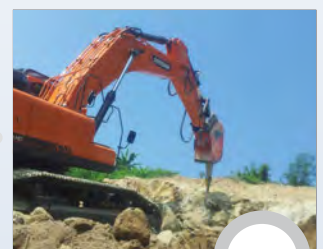
2016 ROMANIA



2016 NEW ZEALAND



2017 JAPAN

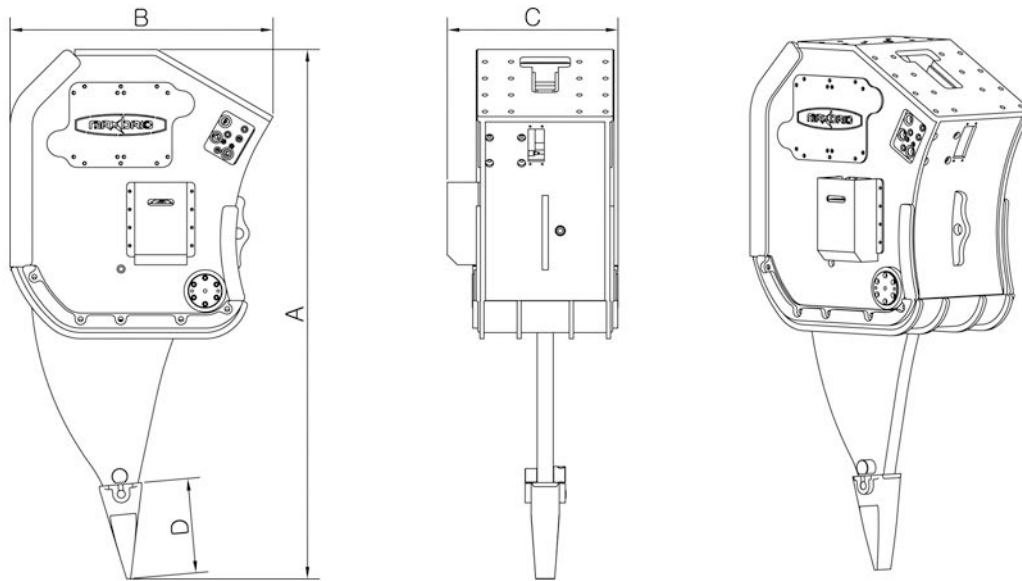


2017 INDONESIA

2017



Technical Specification



Model		Units	BR15	BR25	BR35	BR45	BR55	BR65
Applicable Excavator		ton	12~17	20~25	28~32	33~40	42~52	53~60
Frequency		Vpm	1700	1700	1700	1700	1700	1700
Setting Pressure		kg/cm ²	250	250	250	250	250	250
		psi	3556	3556	3556	3556	3556	3556
Oil Flow		l/min	100~120	120~140	180~200	260~280	290~310	320~350
		gpm	26~32	32~37	48~53	69~74	77~82	85~93
Dimension	Height (A)	in	70	97	104	115	119	134
		mm	1770	2468	2630	2912	3018	3416
	Length (B)	in	41	48	52	57	59	64
		mm	1030	1208	1310	1440	1486	1617
	Width (C)	in	30	32	34	36	37	41
		mm	760	806	855	913	928	1033
Tooth (D)	in	10	19	19	19	23	23	
	mm	265	470	470	470	575	575	
Main Body Weight (Incl. Mounting Bracket)		lb	3300	6000	7900	10200	11400	15700
		kg	1500	2750	3610	4640	5200	7150

► The above specifications are subject to change without prior notice for quality enhancement.



Head Office

9, Geomsan-ro 361beon-gil, Tanhyeon-myeon, Paju-city, Gyeonggi-do, Korea

Sales Division

358-39, Hosu-ro, Ilsan-donggu, Goyang-city, Gyeonggi-do, Korea

Tel : +82-31-906-7896

Fax : +82-31-906-7822

E-mail : info@dd-eng.com

Homepage : www.dd-eng.com

Distributed by

Jan. 2018